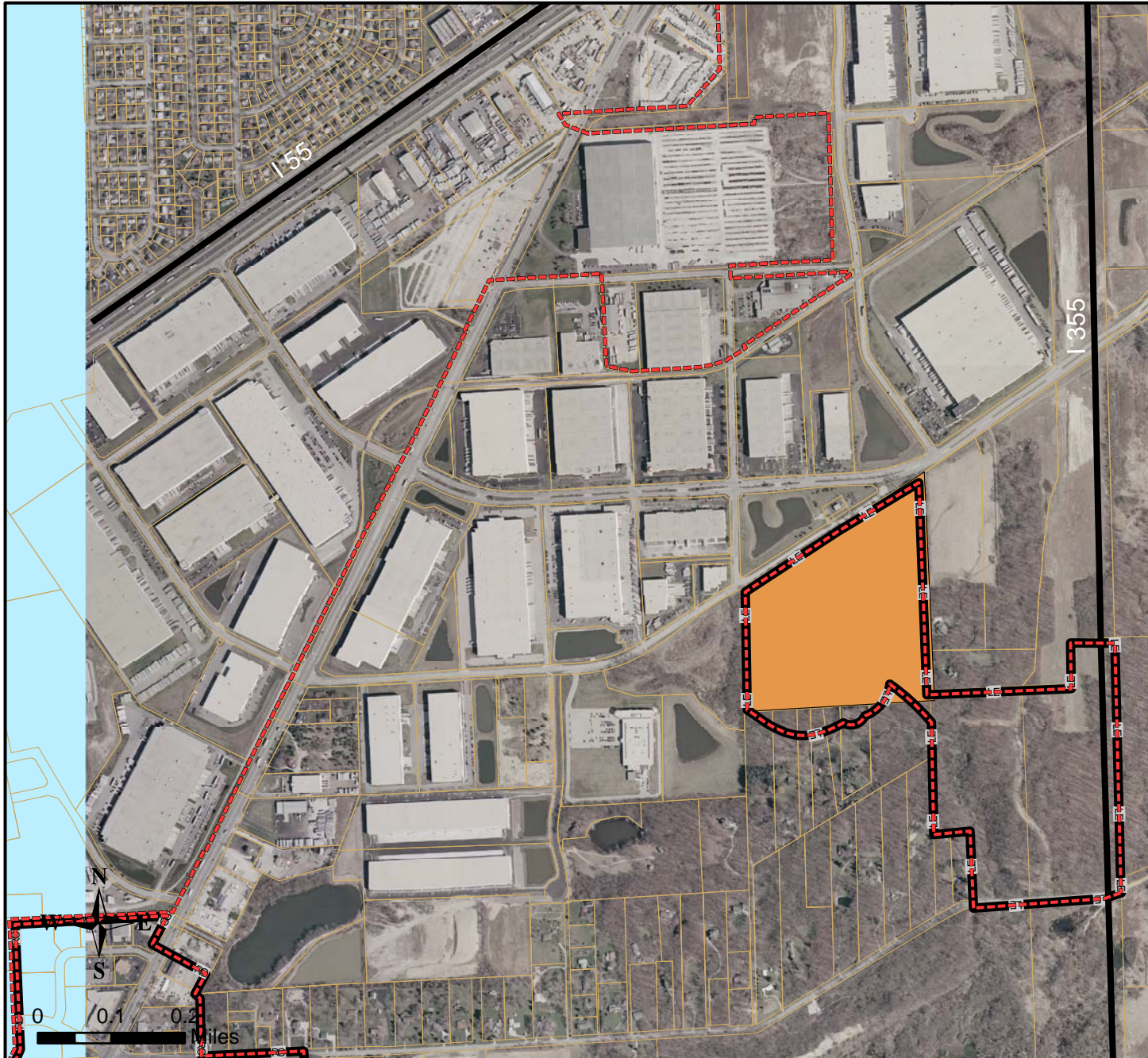


Site 20



Total Acres: 38.7
Zoning: Lemont ORI Office, Research and Light Industrial
Sanitary Sewer Service: Illinois American
Water Supply: Illinois American
Electrical: ComEd
Natural Gas: NICOR
Telecommunications: SBC or Comcast
PINs: 02-13-400-016
02-13-400-022
02-13-400-026
02-13-400-027

This site is currently in incorporated Lemont. Per the 2005 Lemont-Woodridge Boundary Line Agreement, this site can be disconnected from Lemont and annexed to Woodridge at the time of development. The site is immediately south of Internationale Centre Business Park and west of Park 355, a 37 acre business park approved in mid-2005 that will include up to 700,000 square feet of space. This site is located near Joliet Road-I-55 interchange and west of I-355 extension. Parcel assemblage required. Prospective uses include light industrial, office and warehouse.

Contact: Village of Woodridge
Planning and Development
5 Plaza Drive
Woodridge, IL 60517
(630) 719-4711

