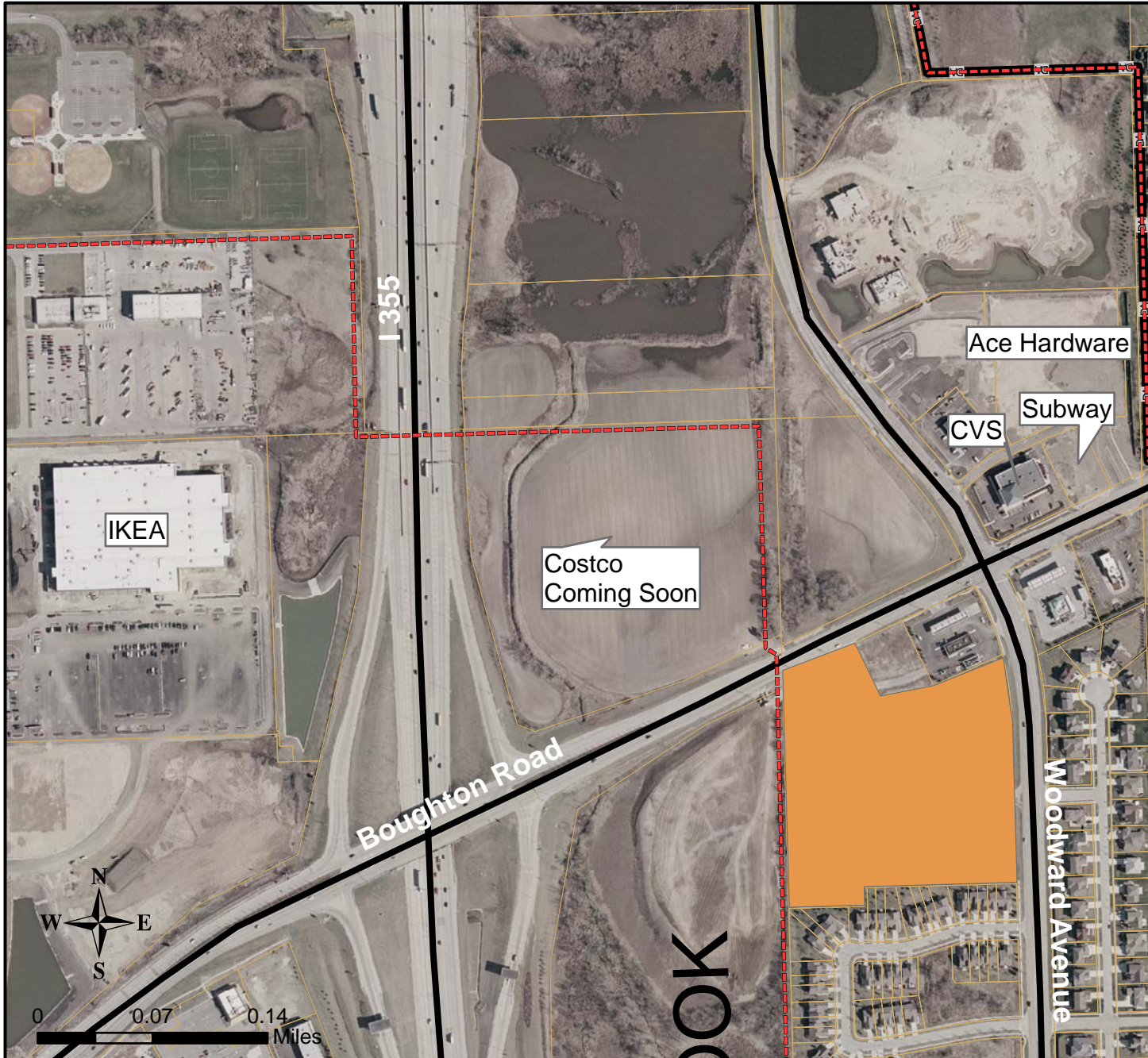


Site 14



Total Acres: 11.9
Zoning: ORI Office, Research and Light Industrial
Average Daily Traffic: 39,800
Sanitary Sewer Service: DuPage County
Water Supply: Village of Woodridge
Electrical: ComEd
Natural Gas: NICOR
Telecommunications: SBC or Comcast
PINs: 10-06-108-040

This development site is part of a 445-acre tract zoned for mixed-use development including offices, research and development facilities, retail stores, and single and multi-family homes. This site is an excellent location for a shopping center, retail stores, or restaurants. It is located 800' east of the Boughton Road/I-355 interchange.

Contact: Mike Butler
James and Associates
760 Pasquelli Drive
Westmont, IL 60559
(630) 789-5000

